



**SELECTIVE ENHANCEMENTS WITH TOPAZ ADJUST**

## Sample Project

In this project, we will walk you through a quick example workflow. This example will use a combination of presets, manual adjustments and demonstrate the use of the new Local Adjustments brush.



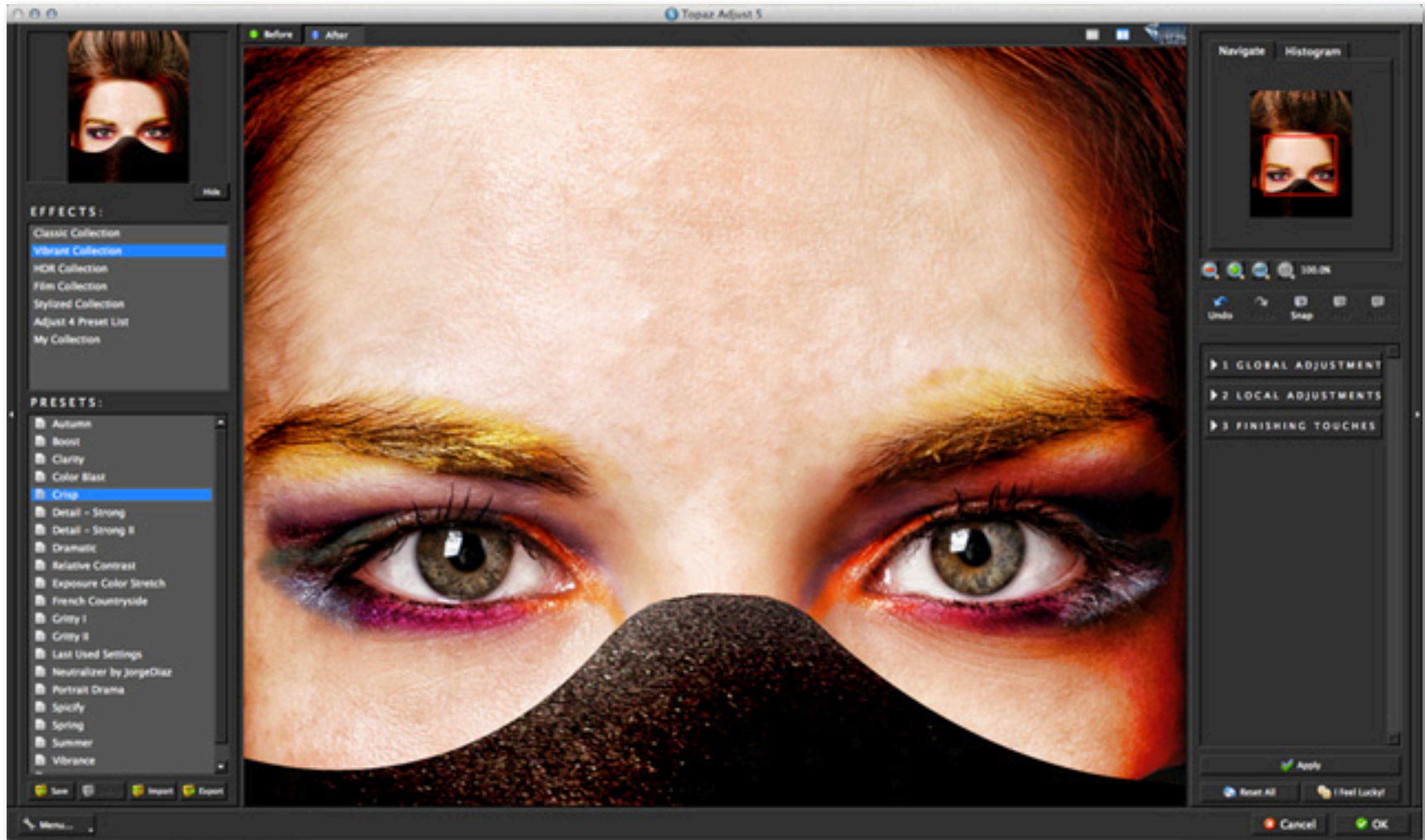
Before Adjust

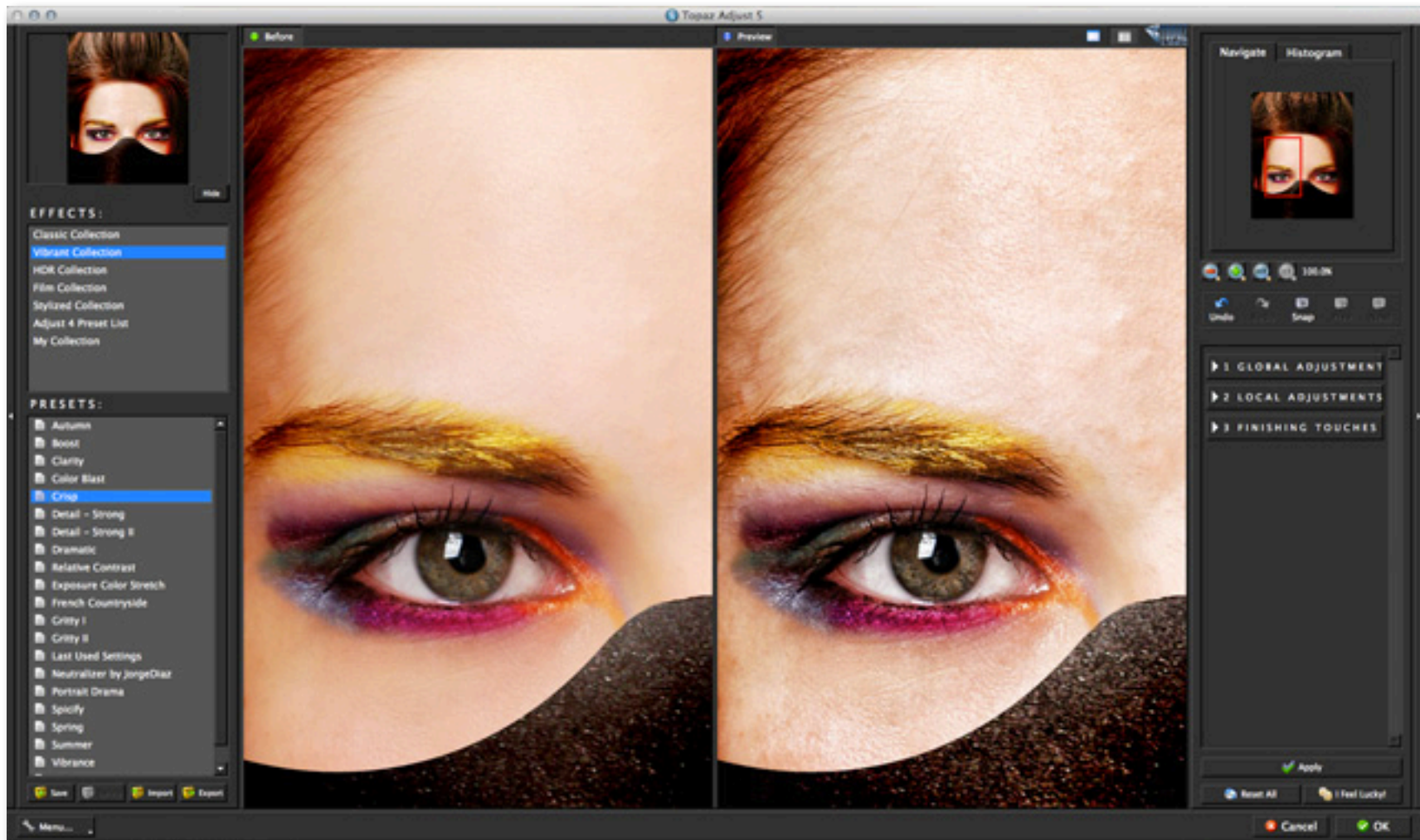


After Adjust

We want to enhance the color and detail in the model's eyes and hair...just to give the image a little more POP. So let's get started.

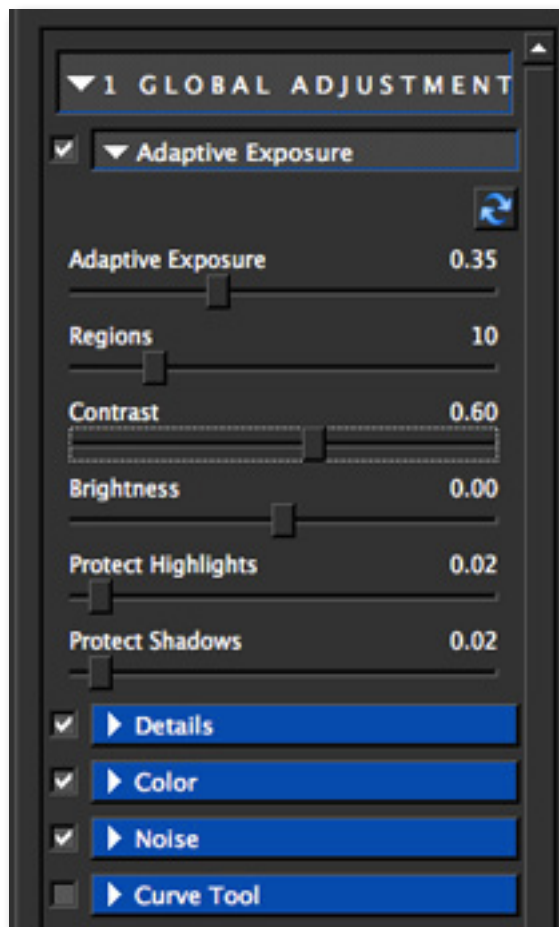
1. Open your image in Photoshop (or another compatible host program) and go to Filters -> Topaz Labs -> Adjust 5.
  2. Once your image loads click on the Reset All button to clear any applied adjustments.
  3. Use the zoom tools to zoom in on a specific part of your image. Then you can click on the preview and drag it around until you find an area that you like.
  4. Go to your Effects / Presets panel on the left side of the screen and select the Classic Collection from the Effects Menu.
  5. Scroll through the Preset list and find the Crisp preset. To select it, just click on it and the sliders will automatically adjust to the pre-defined settings and parameters.
  6. Use the spacebar shortcut key to compare your before/after image in the preview window.
- Using the sliders in the tool panel, we can further tweak the settings to enhance the look for this image.
7. Go to the Tool panel on the right side of the interface and click on the Global Adjustments tab to open it. We will work our way down through the tabs.





8. Open the Adaptive Exposure Tab and we are going to slightly increase the Regions slider. This will apply the Adaptive Exposure adjustments over 10 regions of the image...giving just a little more local contrast and variation in detail and exposure.

9. Next, we are going to increase the Contrast to 60.

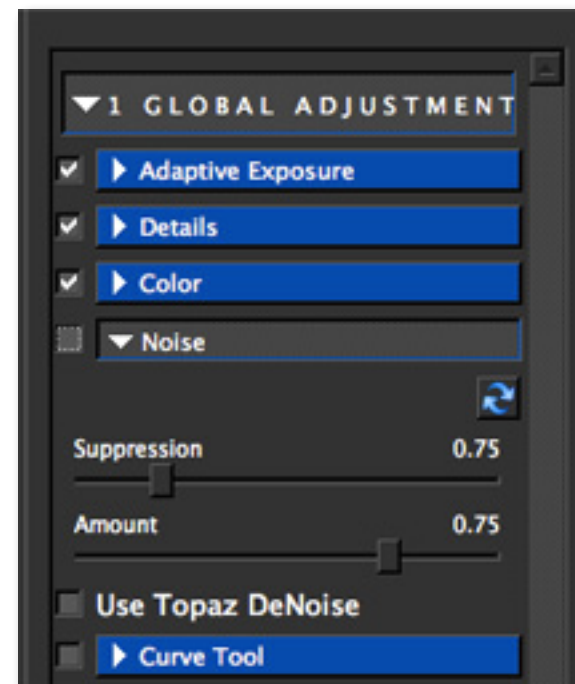


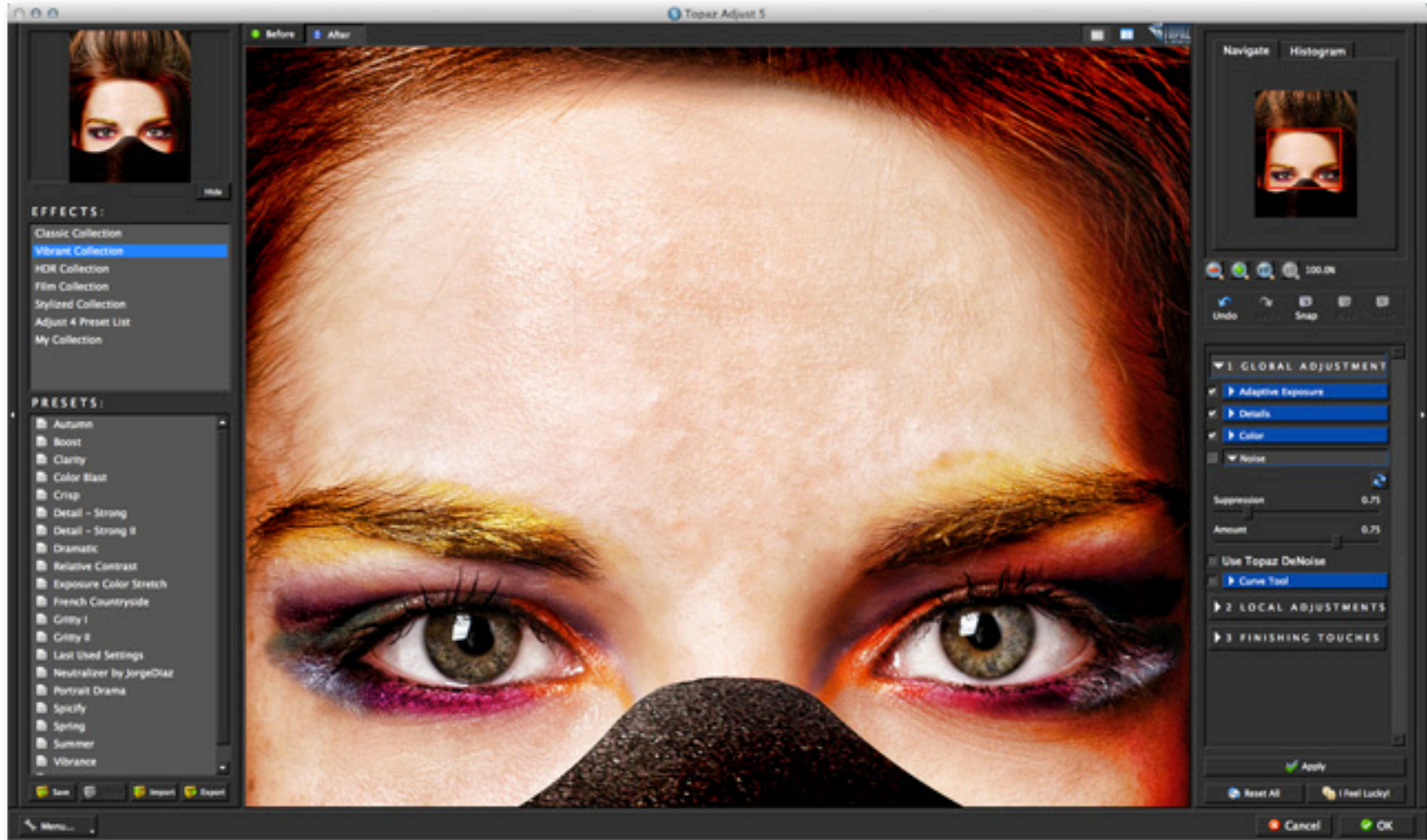
10. To enhance the details, go to the Details tab and we are going to increase the Sharpen slider to 1.20 and the Threshold to 0.20.

11. In the Color tab we are going to increase the Saturation Boost slider to 1.04. This slider increase the saturation of the weaker colors in the image.

12. The Noise tab will help clean up the image a little. Click the checkbox next to the Noise tab to enable it.

13. Increase the both the Suppression slider and the Amount slider to 0.75. Be sure to zoom in on your image to help identify and effectively remove noise from your image.





Be sure not to over-apply the noise reduction because it can soften your and blur your important image detail.

You may notice that applied adjustments have made the model's skin very harsh, we can use the Brush Out and Smooth brush in the Local Adjustments tab to fix this.

14. Click on the Local Adjustments tab to open it.

15. Select the Brush Out tool. This will allow us to brush out the applied effects from the model's face.

16. Set your brush characteristics, and then brush over the face - around the eyes and eye brows.

17. Switch to the Smooth brush, which will allow us to smooth out her skin.

18. Make adjustments to the brush characteristics and then brush over the face - around the eyes and eye-brows.

If you make a mistake you can use the Local Reset All button, the undo button or the erase button to fix it.

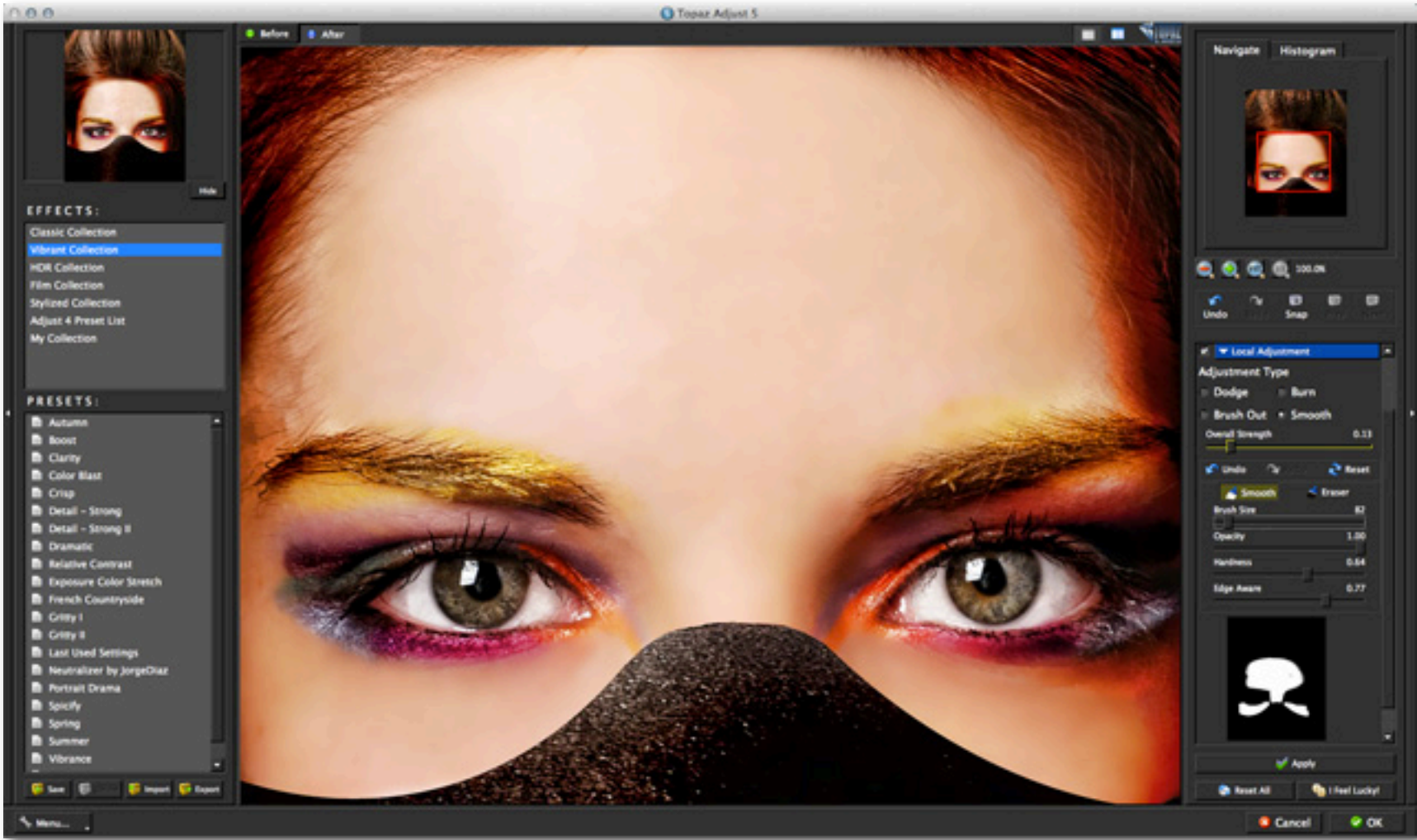
19. Use the spacebar shortcut key to compare your before/after image in the preview window.

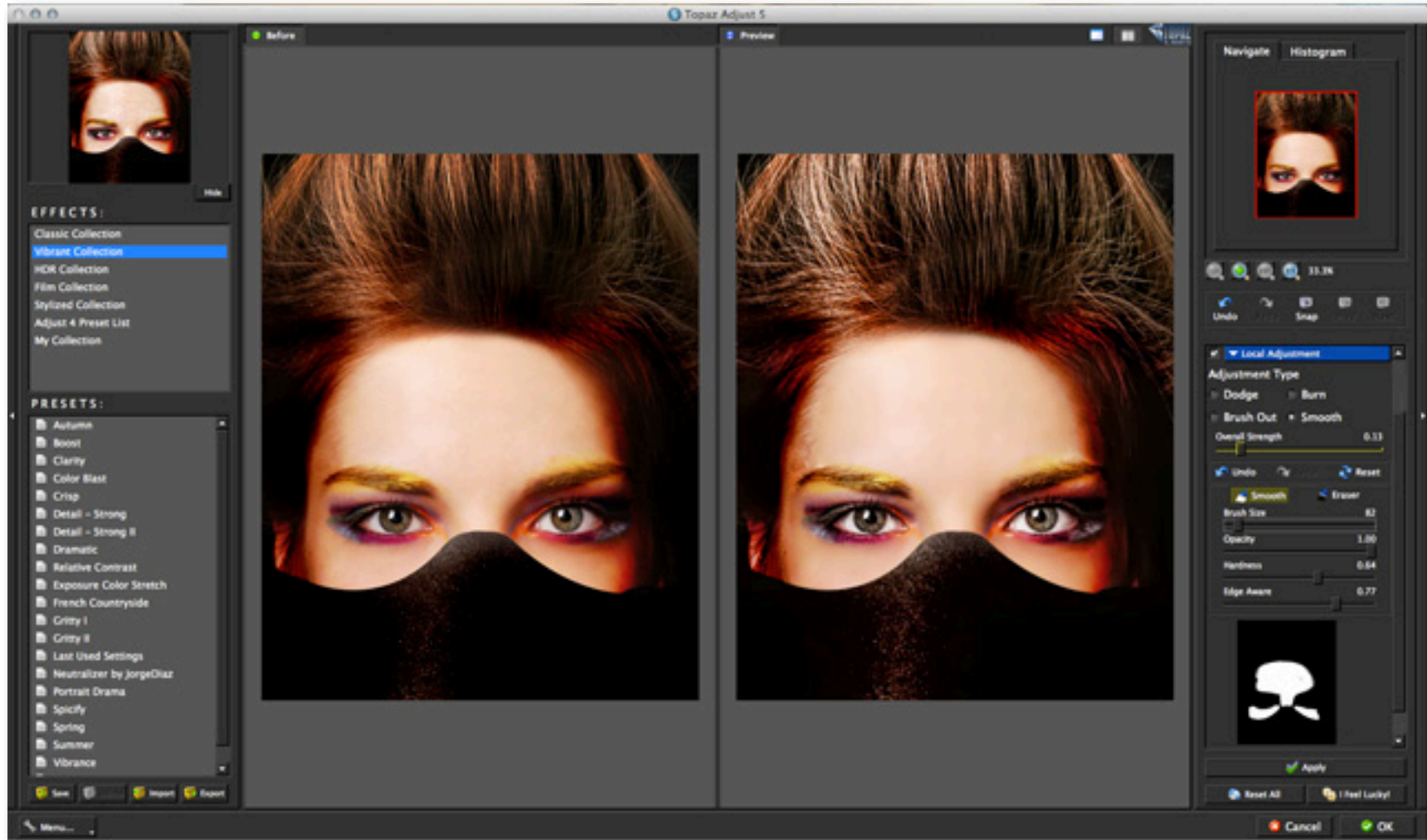
20. Click the "OK" button to process your changes and save your image back to Photoshop.

**Remember:** If you feel like the applied effect is too strong for your image then you can use the transparency slider to make overall effect more transparent and lessen how heavily it is applied to your image.

You can access this slider in the Finishing Touches tab.

This is a great way to tone down effects so that your image does not appear over-enhanced.







Before Topaz Adjust



After Topaz Adjust

## Connect with Topaz



Check out our new **Forum** and our **blog** for tutorials, tips and updates from Topaz Labs!



Follow us on Twitter for notifications of recent news and easily get in touch with us whenever you feel like it!



Find us on our Facebook page and network with other Topaz users!



Participate in the entirely user-led Topaz Flickr group for a helpful and highly active community for Topaz Photoshop plug-ins!



Subscribe to our YouTube channel to keep up with any newly released product video tutorials!