



TOPAZ LABS

BASIC ARTIFACT ELIMINATION WITH TOPAZ DEJPEG

Sample Project

In this tutorial, we will walk you through a sample project, step-by-step, to help you become more familiar with the DeJPEG program focusing on using the default presets.



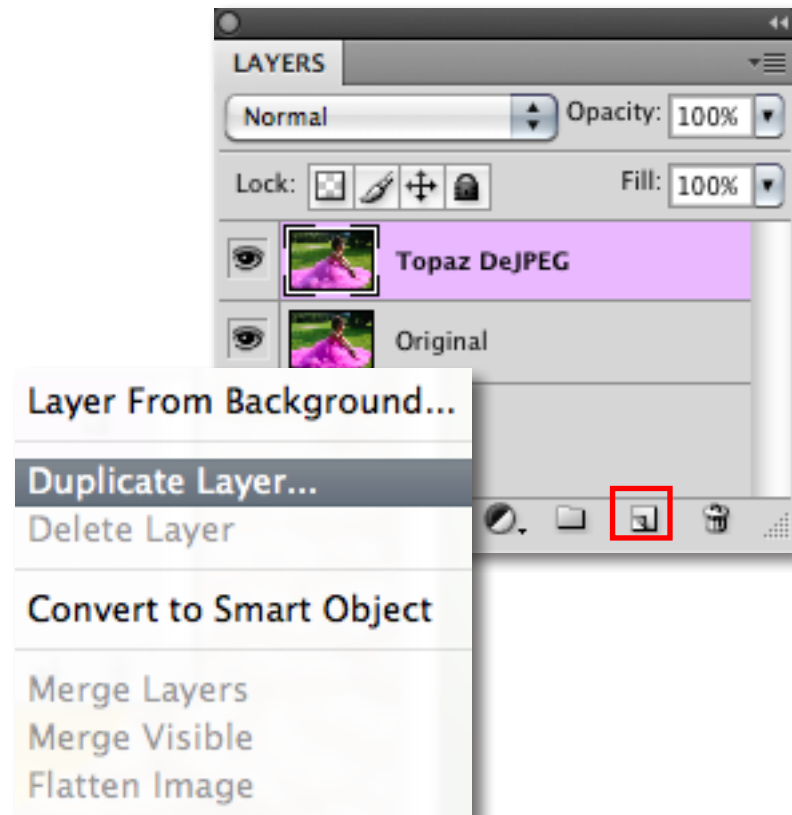
Before Topaz Adjust



After Topaz Adjust

We will be using this artifact-damaged image for our example. The goal for this image is to remove the artifacts that are distorting the image and enhance the edges and lines. In the following steps, we will show you how to achieve optimal results with your own photos, following this model. So, let's get started.

1. Open an image file.
2. Create a duplicate layer of your image. Right-click on your image layer in your layers and select "Duplicate Layer". You can also achieve this by selecting your image layer and dragging it down to the new layer icon.

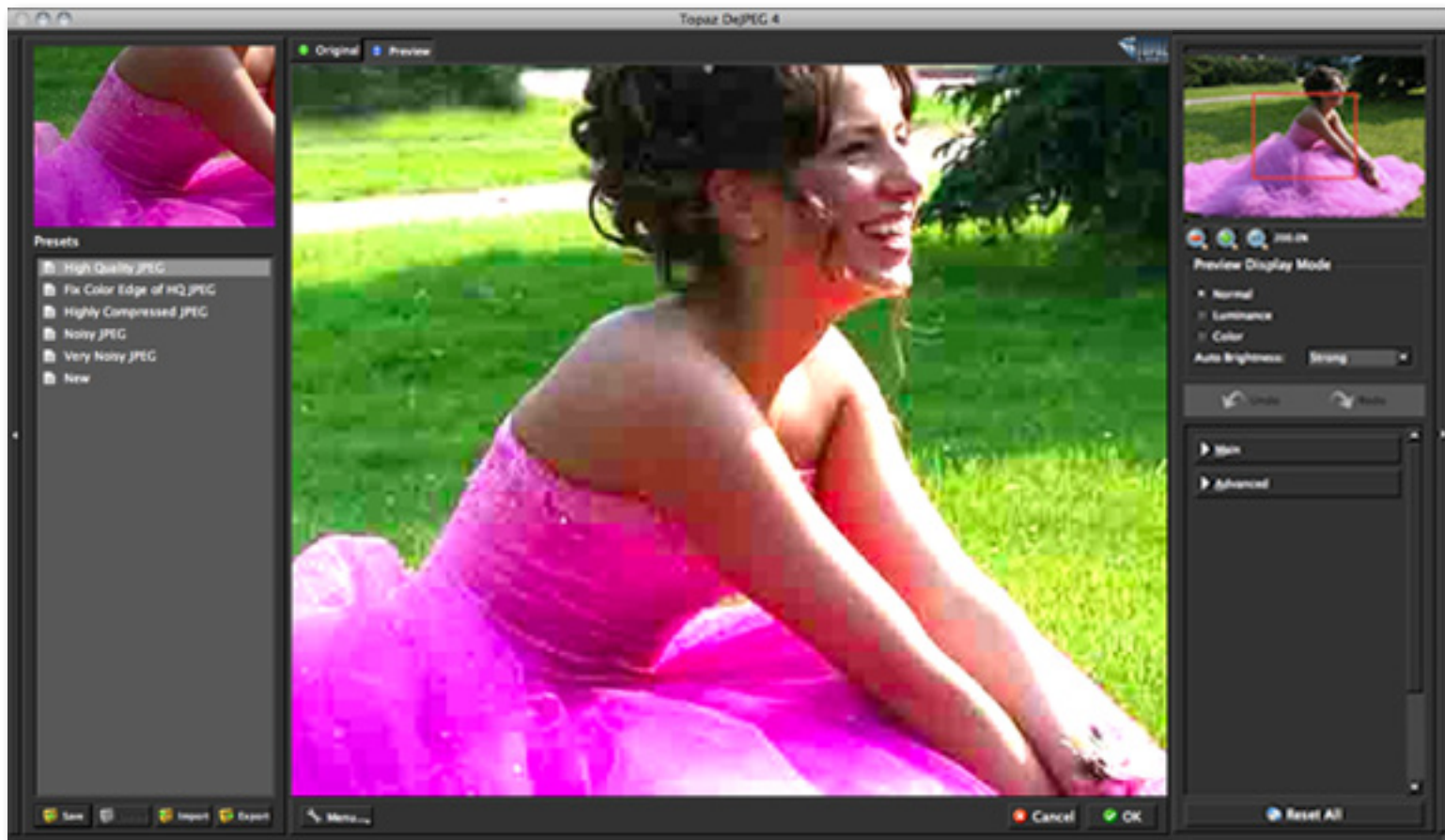


Workflow

3. To begin working on your image go to Filters -> Topaz Labs -> DeJPEG 4.

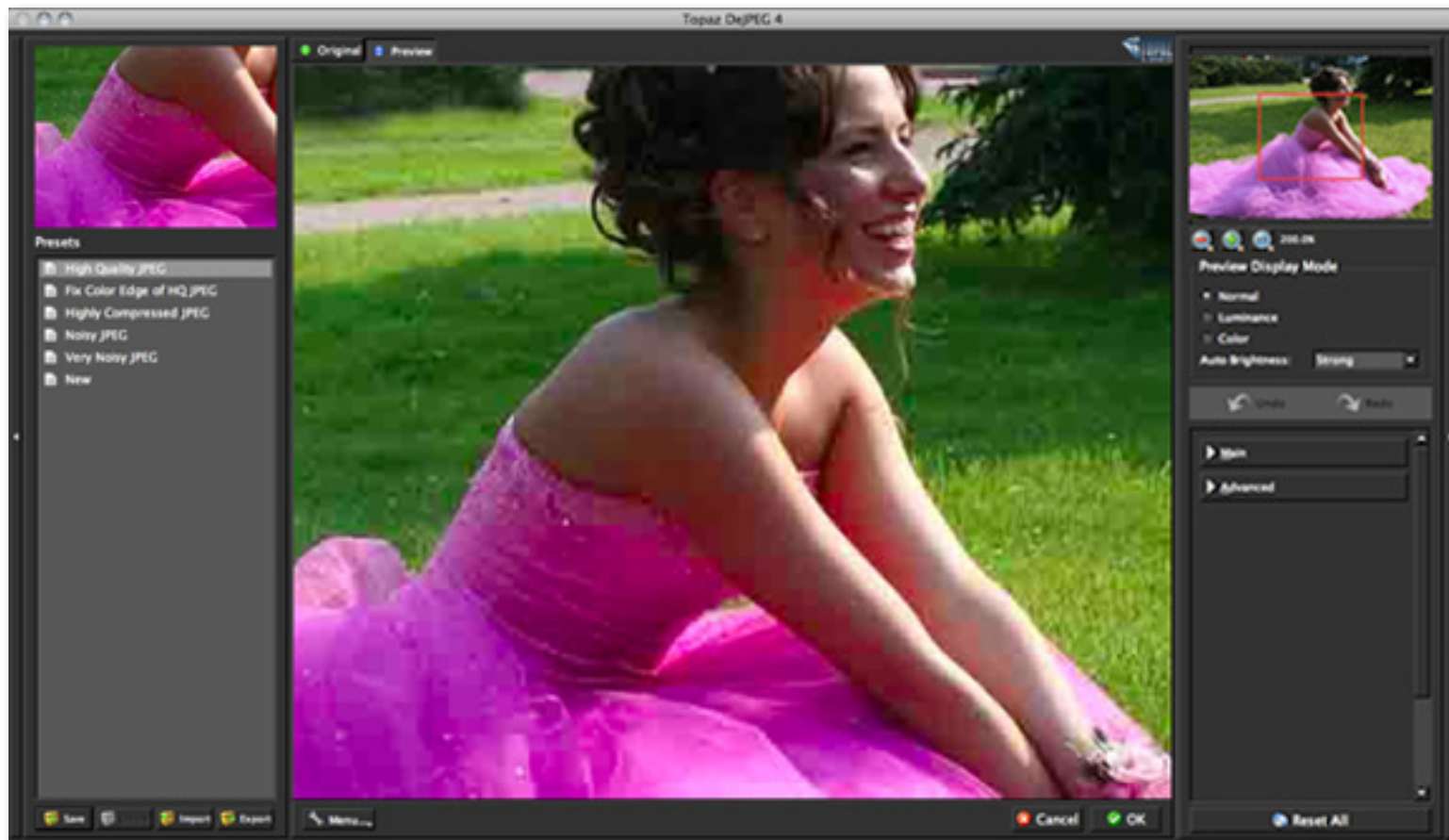
4. Once your image loads, use the zoom tools to zoom in on a specific part of your image. Then you can click on the preview and drag it around until you find an area that you like.

We want to remove the checker-boarding artifacts that are distorting the image, and reestablish the character of the image. To achieve this we will be working with the presets for this example, but you can start any way you like.



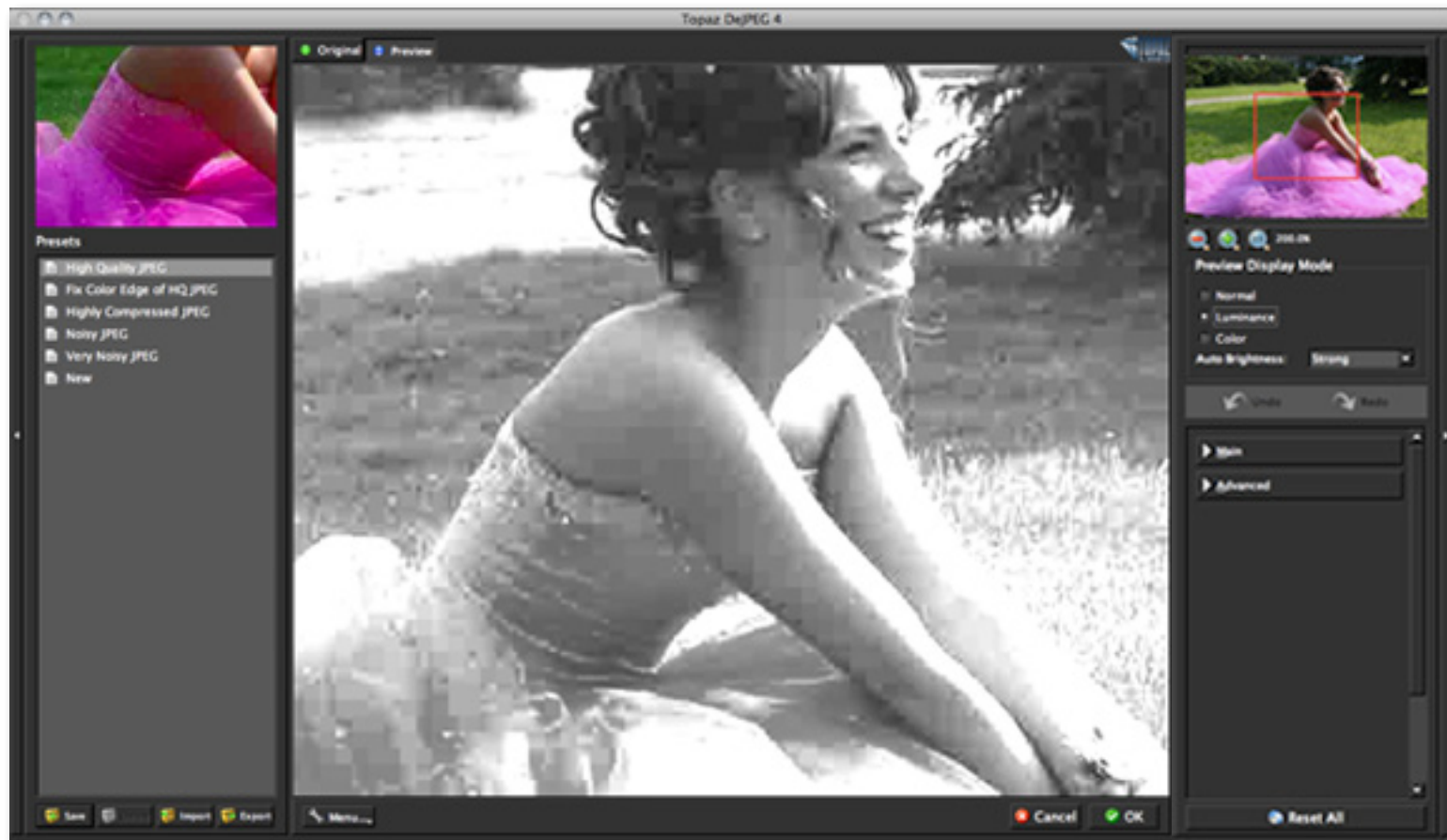
Normal Mode (Auto-brightness disabled)

By default your mode is set to Normal when editing in DeJPEG. For most images this mode is sufficient for removing artifacts. More advanced users however, may want to incorporate the use of all three modes for optimal precision in removing artifacts. The Auto-brightness feature is disabled here making the image darker and artifacts less visible.



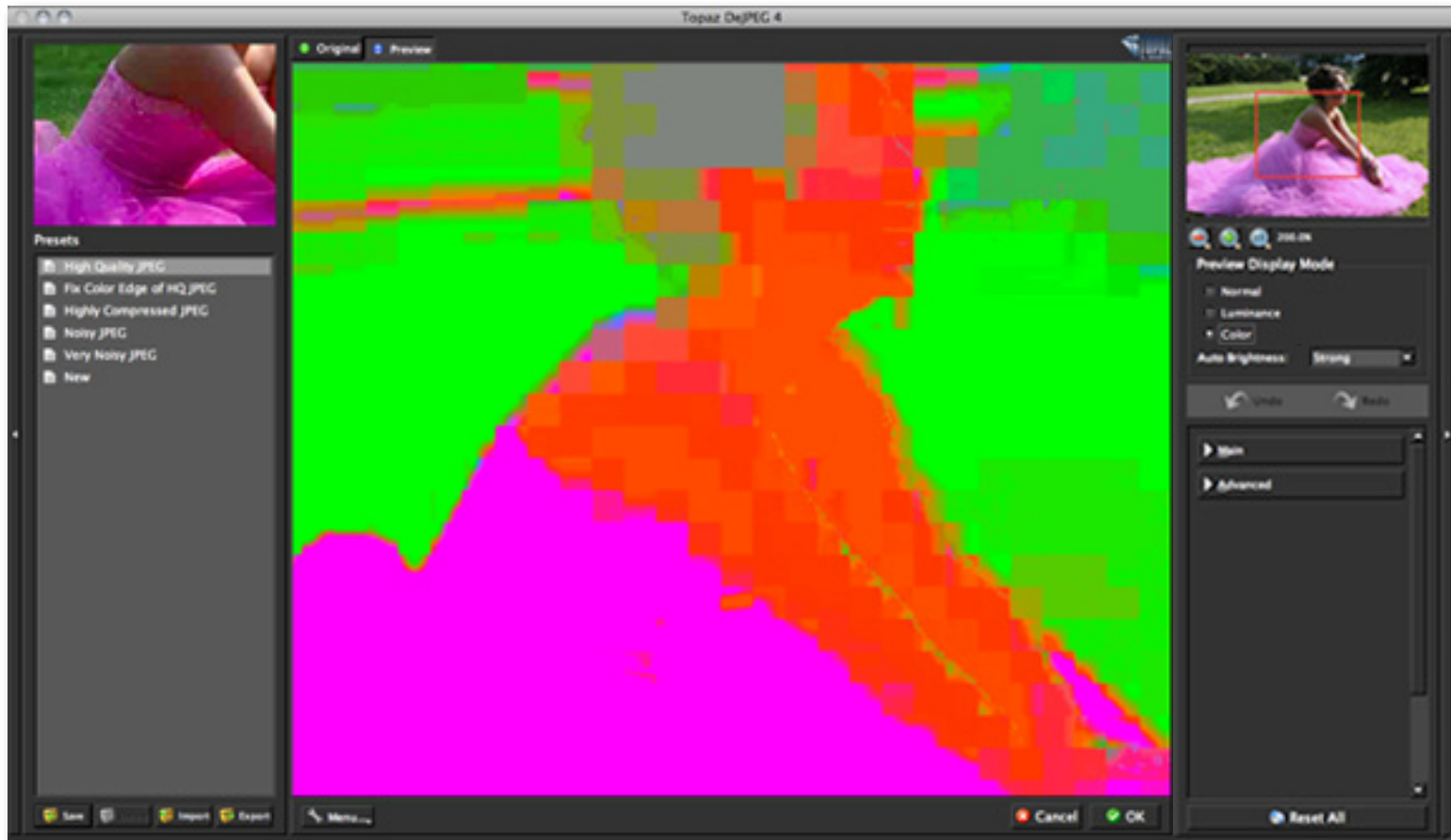
Luminance Mode

Changing the Preview Display Mode to Luminance (black-and-white channel) provides another helpful view for identifying jpeg artifacts within your image.



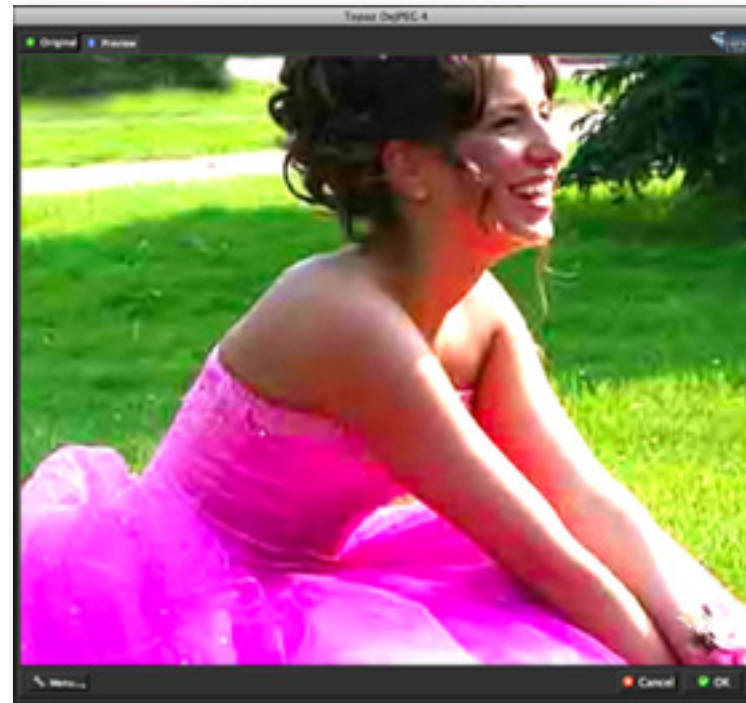
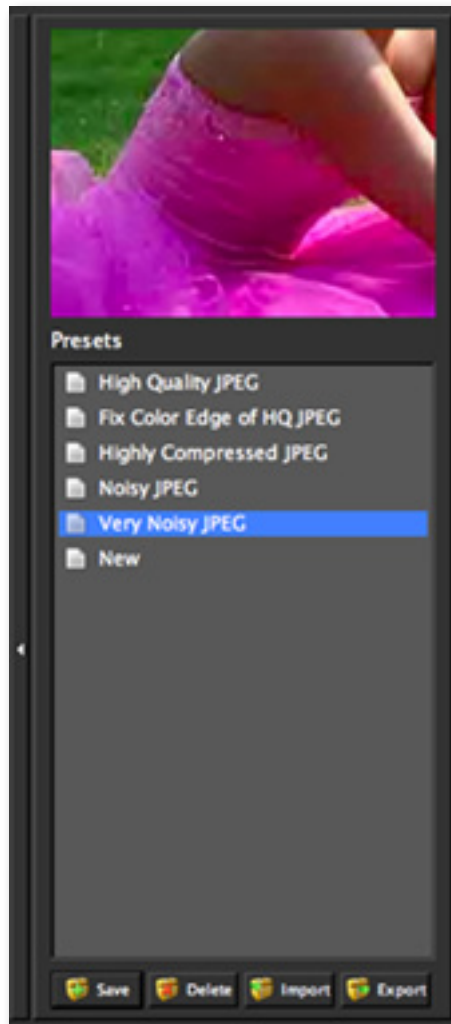
Color Mode

Changing the Preview Display Mode to Color provides another helpful view for identifying jpeg artifacts within your image.



Workflow

5. If you want to choose a default preset, scroll through the panel on the left side of the screen. To select it, just click on it and the sliders will automatically adjust to the pre-defined settings and parameters. For this example we will be using the Very Noisy JPEG preset.



If you are satisfied with the preset adjustments then you can click “OK” to process your image and save it back to Photoshop. Since I am happy with the immediate results I will go ahead and click OK to save and process my changes.

For this example, only the Very Noisy JPEG preset was used to correct recover this JPEG image.

Don't forget that you can use the shortcut keys in Topaz DeJPEG 4 to speed up your workflow.

Workflow



Before Topaz DeJPEG

Workflow



After Topaz DeJPEG

Shortcut Keys

Topaz DeJPEG uses some shortcut keys to speed up your workflow. Many of these keys are similar to those in Photoshop. The following keys work at all times.

Action	MAC Shortcut	PC Shortcut
View Original Image	Spacebar	Spacebar
Reset All	CMD-ALT-R	CTRL-ALT-R
Zoom In	+ or CMD - +	+ or CTRL - +
Zoom Out	- or CMD - -	- or CTRL - -
Undo	CMD -Z	Ctrl - Z
Redo	CMD - Shift - Z	Ctrl - Shift - Z

ADDITIONAL SHORTCUTS

Action	Shortcut
M	Expands / Collapses Main Tab
A	Expands / Collapses Advanced Tab
Left or Right Arrow Key	Scrolls through presets
Return (enter) key	Applies selected preset
[key	Reduces selected slider value by 0.1
] key	Increases selected slider value by 0.1
Home Key	Set the slider value to minimum
End Key	Set the slider value to maximum
Double-click slider name	Resets the slider value to 0

Connect with Topaz



Check out our new **Forum** and our **blog** for tutorials, tips and updates from Topaz Labs!



Follow us on Twitter for notifications of recent news and easily get in touch with us whenever you feel like it!



Find us on our Facebook page and network with other Topaz users!



Participate in the entirely user-led Topaz Flickr group for a helpful and highly active community for Topaz Photoshop plug-ins!



Subscribe to our YouTube channel to keep up with any newly released product video tutorials!

Contact Information

Topaz Labs LLC
5001 Spring Valley Road
Suite 400 East
Dallas, TX 75244

Technical Support

Visit: <http://topazlabs.com/support/>

Topaz Labs LLC, a privately owned company in Dallas, Texas, focuses on developing advanced video and image enhancement technology. With today's widespread use of digital still cameras, digital video cameras, and HDTV, the need for high-quality digital images and videos has greatly increased. Topaz Labs' mission is to bring practical state-of-the-art image and video enhancement technology to both professionals and consumers.

Be sure to check out the complete line up of Topaz products.

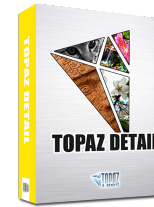
Image Plug-ins



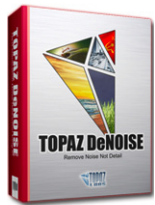
Ultimate control over image exposure, detail, and color gives you the power to make your photos pop.



Advanced JPEG artifact reduction filters eliminate JPEG compression artifacts while preserving image detail like never before.



3 levels of intricate and specific detail enhancement for naturally enhanced images with no halos.



Advanced noise reduction filters noise while maximizing and retaining image detail simply and effortlessly.



Specializes in overall image improvement. Features sharpening, reconstructing, enlarging, high-quality noise removal and JPEG artifact damage tools.



Remove unwanted backgrounds from your digital images quickly and easily with the new Topaz ReMask.



Takes any of your regular photos and effortlessly turn them into beautiful works of art.



Specializes in creating crisp and stylized images. Also features extensive smoothing capabilities.



Bring the power of Topaz to your Aperture, iPhoto and Lightroom workflow with the new Fusion Express plug-in.

Video Plug-ins



Increase video quality with this suite of video enhancement filters utilizing super-resolution technology.



Easily and efficiently capture video frames and significantly increase their quality and resolution with this stand-alone Windows application.

Go to <http://www.topazlabs.com/downloads> to get your 30-day free trial!